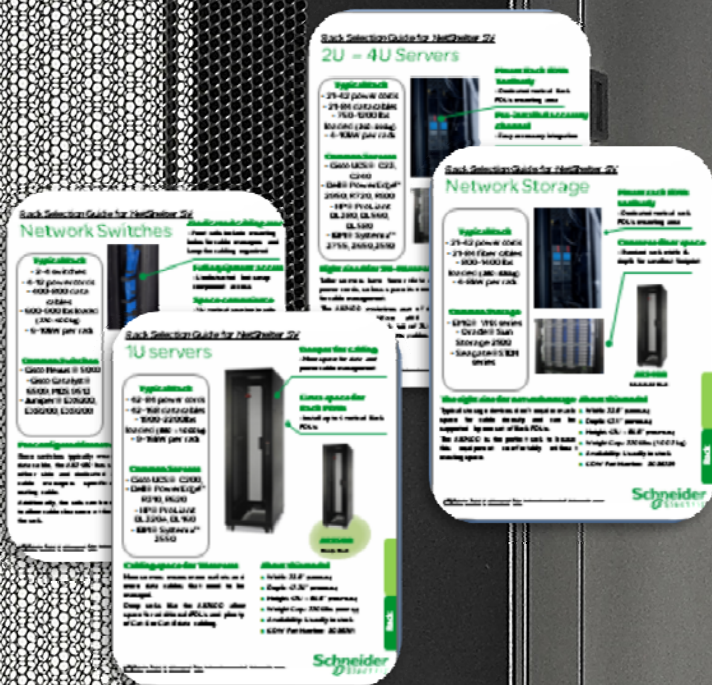


# Rack Selection Guide for NetShelter SV



Choosing the right rack based on application and equipment type



# Rack Selection Guide for NetShelter SV

## 1U servers

### Typical Rack

- 42-84 power cords
- 42-168 data cables
  - 1900-2200lbs loaded (860 – 1000kg)
  - 9-16kW per rack

### Common Servers

- Cisco UCS® C200, R310, R620
- HP® ProLiant DL320e, DL160
- IBM® System x™ 3550



**Deeper for cabling**  
-More space for data and power cable management

**Extra space for Rack PDUs**  
-Install up to 4 vertical Rack PDUs



**AR2500**  
Deep Rack

### Cabling space for 1U servers

More servers means more outlets and more data cables that need to be managed.

Deep racks like the AR2500 allow space for additional rPDUs and plenty of Cat-5 or Cat-6 data cabling.

### About this model

- Width: 23.6" (600mm)
- Depth: 47.25" (1200mm)
- Height: 42U – 85.8" (2057mm)
- Weight Cap.: 2205lbs (1002 kg)
- Availability: Usually in stock

# Cable Management Selection Guide for NetShelter SV

## 1U servers

### Typical Rack

- 42-84 power cords
- 42-168 data cables
- Mixed copper and fiber data
- 9-16kW per rack

### Common Servers

- Cisco UCS® C200,
- Dell® PowerEdge™ R310, R620
  - HP® ProLiant DL320e, DL160
- IBM® System x™ 3550

### Sturdy cable protection

- Steel rings provide stiffness to prevent accidents

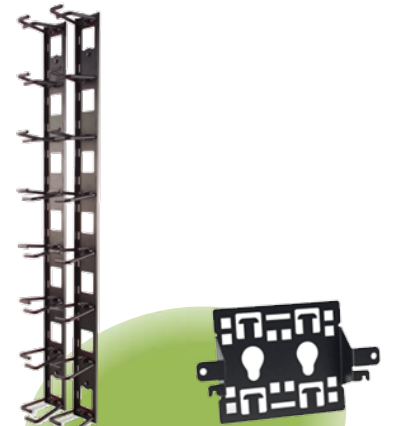


### Toolless mounting

- Fits in Zero U accessory channel for easy install

### Organize power or data

- Rings allow any type of cable to be installed or removed quickly



AR8442

AR824002

Ring Cable Organizer

Additional accessory mounting brackets

### Organizes and protects cables

Cable rings allow easy installation for both power and data cabling, and provide quick access and traceability during equipment refresh cycles. Its low profile helps ensure that equipment is visible and accessible.

Up to 55 Cat6a data cables can be managed and protected with the AR8442. Acquire additional AR824002 SV accessory brackets for Rack PDU and cable management mounting on both sides of the cabinet.

### About this model

- Rack U Span: 21U
- Compatible Racks: All
- Cable Capacity: 30 Cat6a
- Availability: Usually in stock

# Rack Selection Guide for NetShelter SV

## 2U – 4U Servers

### Typical Rack

- 21-42 power cords
- 21-84 data cables
  - 750-1200 lbs loaded (340-544kg)
  - 4-10kW per rack

### Common Servers

- Cisco UCS® C23, C240
- Dell® PowerEdge™ 2950, R720, R900
  - HP® ProLiant DL380, DL560, DL580
- IBM® System x™ 3755, 3650, 3550



### Mount Rack PDUs Toollessly

- Dedicated vertical Rack PDUs mounting area

### Pre-installed accessory channel

- Easy accessory integration



**AR2400**  
Standard Rack

### Right sized for 2U-4U servers

Taller servers have fewer data and power cords, so less space is needed for cable management.

The AR2400 maximizes use of data center floor space and still accommodates a rack full of 2U-4U 19" servers, data and power cables.

### About this model

- Width: 23.6" (600mm)
- Depth: 41.7" (1060mm)
- Height: 42U – 85.8" (2057mm)
- Weight Cap.: 2205lbs (1002 kg)
- Availability: Usually in stock

# Cable Management Selection Guide for NetShelter SV

## 2U – 4U Servers

### Typical Rack

- 21-42 power cords
- 21-84 data cables
- Copper connections
  - 4-10kW per rack

### Common Servers

- Cisco UCS® C23, C240
- Dell® PowerEdge™ 2950, R720, R900
  - HP® ProLiant DL380, DL560, DL580
- IBM® System x™ 3755, 3650, 3550

### Sturdy cable protection

- Steel rings provide stiffness to prevent accidents

### Toolless mounting

- Fits in Zero U accessory channel for easy install

### Organize power or data

- Rings allow any type of cable to be installed or removed quickly



AR8442

Ring Cable Organizer



AR824002

Additional accessory mounting brackets

### Organizes and protects cables

Cable rings allow easy installation for both power and data cabling, and provide quick access and traceability during equipment refresh cycles. Its low profile helps ensure that equipment is visible and accessible.

Up to 55 Cat6a data cables can be managed and protected with the AR8442. Acquire additional AR824002 SV accessory brackets for Rack PDU and cable management mounting on both sides of the cabinet.

### About this model

- Rack U Span: 21U
- Compatible Racks: All
- Cable Capacity: 30 Cat6a
- Availability: Usually in stock

# Rack Selection Guide for NetShelter SV

## Network Switches

### Typical Rack

- 2-4 switches
- 4-12 power cords
- 400-800 data cables
- 600-900 lbs loaded (270-400kg)
- 6-10kW per rack

### Common Switches

- Cisco Nexus® 5000
  - Cisco Catalyst® 6509, MDS 9513
- Juniper® EX6200, EX8200, EX9200



**Dedicated cabling area**  
-Front rails include mounting holes for cable managers and keep the cabling organized

**Full equipment access**  
-Unobstructed hot-swap component access

**Space convenience**  
-1U vertical spacing in rails for 1U patch panels or devices



**AR2480**

Networking Rack

### Preconfigured for networking

Since switches typically mean lots of data cable, the AR2480 has space on either side and dedicated area for cable managers specifically for routing cable.

Additionally, the rails can be recessed to allow cable clearance at the front of the rack.

### About this model

- Width: 32" (800mm)
- Depth: 41.7" (1060mm)
- Height: 42U – 80.9" (2057mm)
- Weight Cap.: 2205lbs (1002kg)
- Availability: Usually in stock

# Cable Management Selection Guide for NetShelter SV

## Network Switches

### Typical Rack

- 2-4 switches
- 4-12 power cords
- 400-800 data cables
- 600-900 lbs loaded (270-400kg)
- 6-10kW per rack

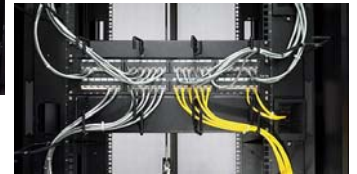
### Common Switches

- Cisco Nexus® 5000
  - Cisco Catalyst® 6509, MDS 9513
- Juniper® EX6200, EX8200, EX9200



### Toolless vertical cable management

-Front rails include holes for front vertical cable management on port side of switches



AR7540 or AR7540100

Toolless Cable Ring



AR8428

Horizontal Cable Manager

### Manage high density cabling

Since switches typically mean lots of data cable, the AR7540 (10pc) & AR7540100 (100pc) combined with AR8428 helps to distribute cable loads to both sides of the rack vertically and horizontally as well as from front to rear while keeping a clean and organized layout within the rack.

### About this model

- Rack U Span: entire height of cabinet
- No Equipment Clearance Impact
- Compatible Racks: All
- Cable Capacity: 247 fiber, 37 Cat6a
- Availability: Usually in stock

# Rack Selection Guide for NetShelter SV

## Network Storage

### Typical Rack

- 21-42 power cords
- 21-84 fiber cables
  - 800-1400 lbs loaded (360-635kg)
  - 4-8kW per rack

### Common Storage

- EMC® VNX series
  - Oracle® Sun Storage 2500
- Seagate® STDN series



### Mount rack PDUs toollessly

- Dedicated vertical rack PDUs mounting area

### Conserve floor space

- Standard rack width & depth for smallest footprint



**AR2400**  
Standard Rack

## The right size for network storage About this model

Typical storage devices don't require much space for cable density and can be supported by one set of Rack PDUs.

The AR2400 is the perfect rack to house this equipment comfortably without wasting space.

- Width: 23.6" (600mm)
- Depth: 41.7" (1060mm)
- Height: 42U – 85.8" (2057mm)
- Weight Cap.: 2205lbs (1002 kg)
- Availability: Usually in stock



# Cable Management Selection Guide for NetShelter SV

## Network Storage

### Typical Rack

- 21-42 power cords
- 21-84 fiber cables
  - Multiple fiber connections
- 4-8kW per rack

### Common Storage

- EMC® VNX series
  - Oracle® Sun Storage 2500
- Seagate® STDN series



Promote proper bend radius for fiber

-Mitigate cable kinking



Eliminate fiber slack

-Move fiber spools to any position to dress fiber runs



AR8443A & AR8654  
Fiber Organizer & Cable Fall

### Protection for fiber cabling

Typical storage devices don't require much space for cable density but they usually need special consideration for the delicate fiber transferring data.

The AR8443A and AR8654 organize fiber and protect it from kinks and other damage.

### About this model

- Rack U Span: 42U
- Compatible Racks: All
- Cable Capacity: 288 fiber
- Availability: Usually in stock